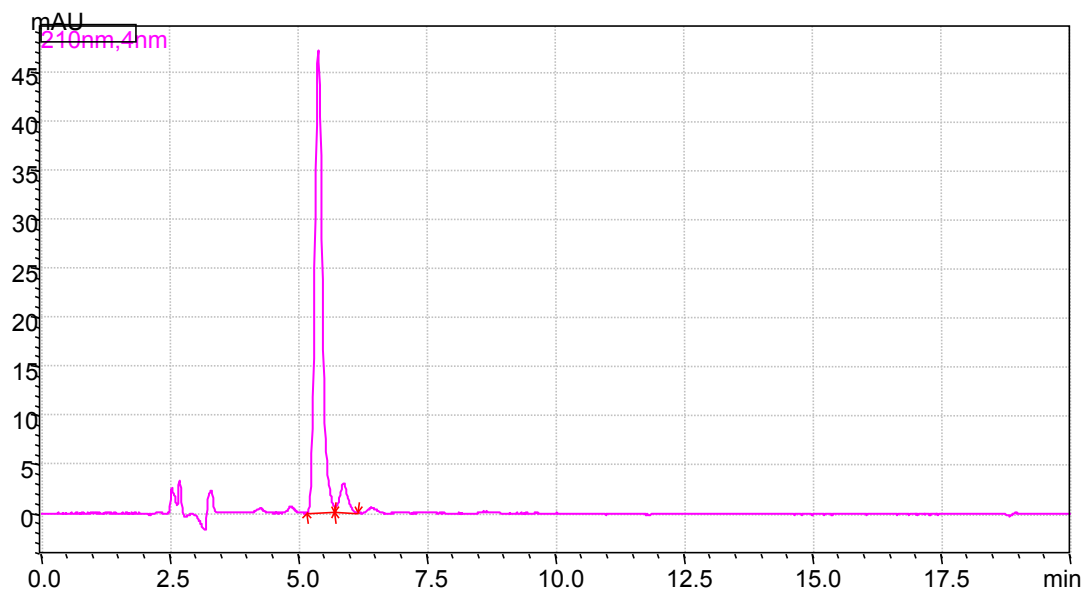
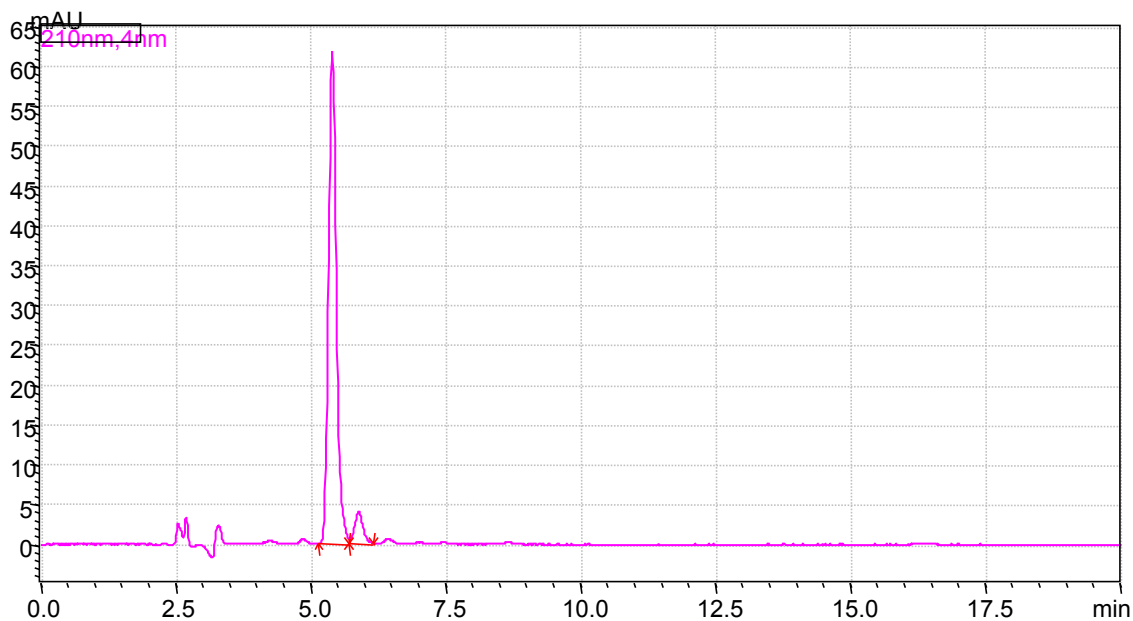


Reb-E Bioconversion181121-1 12.90mg.lcd



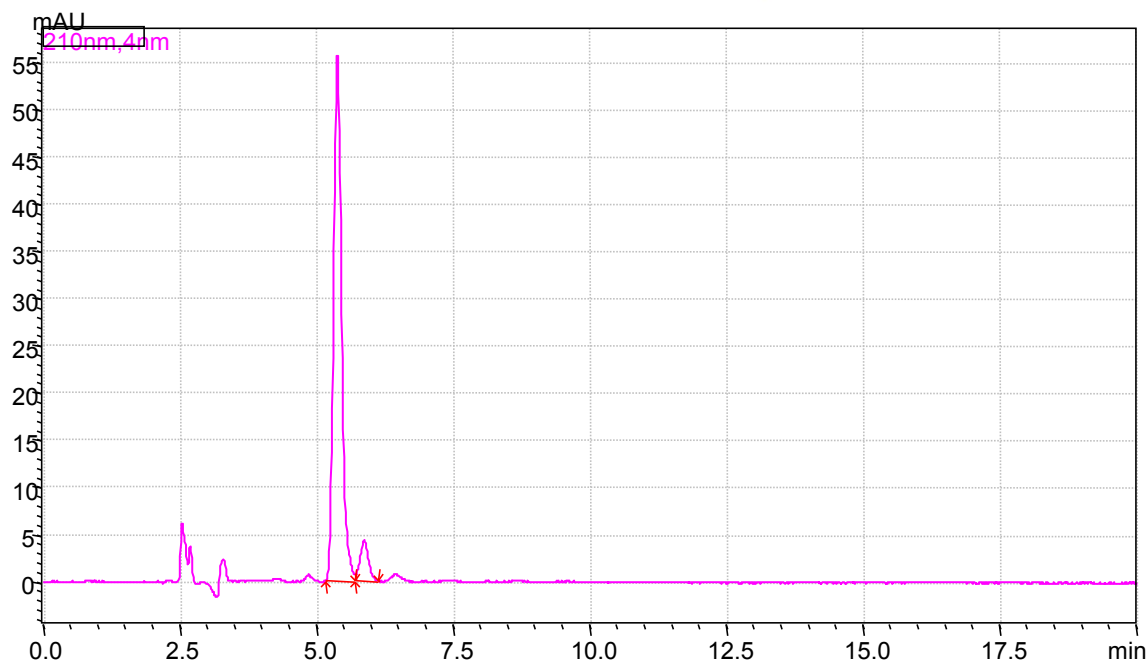
No.	RT	Area	High	Con%	Separation	T.plate	Tailing factor
1	5.403	482857	47187	93.43	--	6189	1.245
2	5.893	33956	3027	6.57	1.692	5988	--
Total		516813	50214	100			

Reb-E Bioconversion181121-1 16.96.lcd



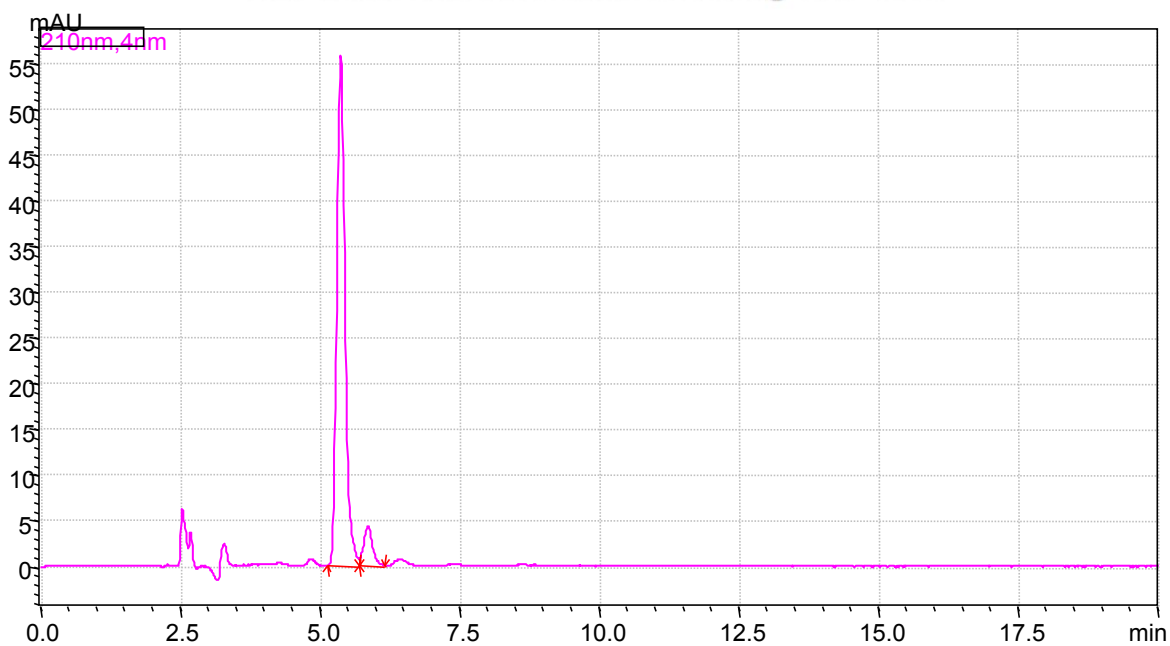
No.	RT	Area	High	Con%	Separation	T.plate	Tailing factor
1	5.409	631298	61909	93.263	--	6106	1.216
2	5.902	45606	4011	6.737	1.692	5966	--
Total		676903	65920	100			

Reb-E reference substance15.49mg 95%-2.lcd



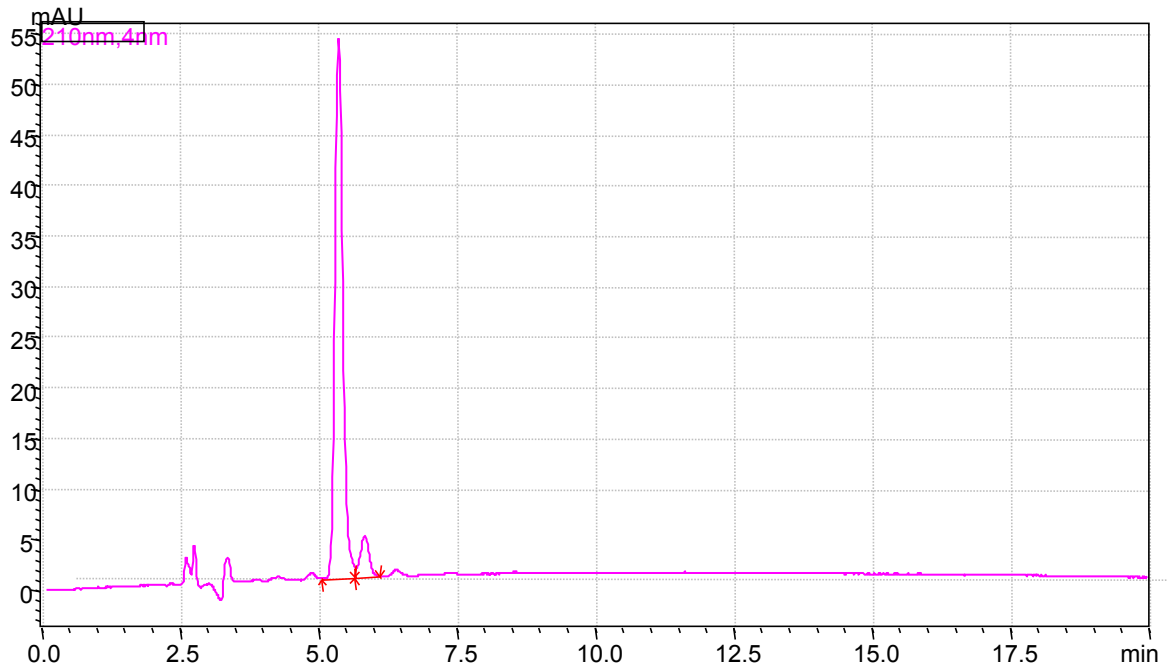
No.	RT	Area	High	Con%	Separation	T.plate	Tailing factor
1	5.393	569107	55749	92.191	--	6171	1.242
2	5.883	48206	4319	7.809	1.682	5819	--
Total		617313	60068	100			

Reb-E reference substance15.49mg 95%-1.lcd



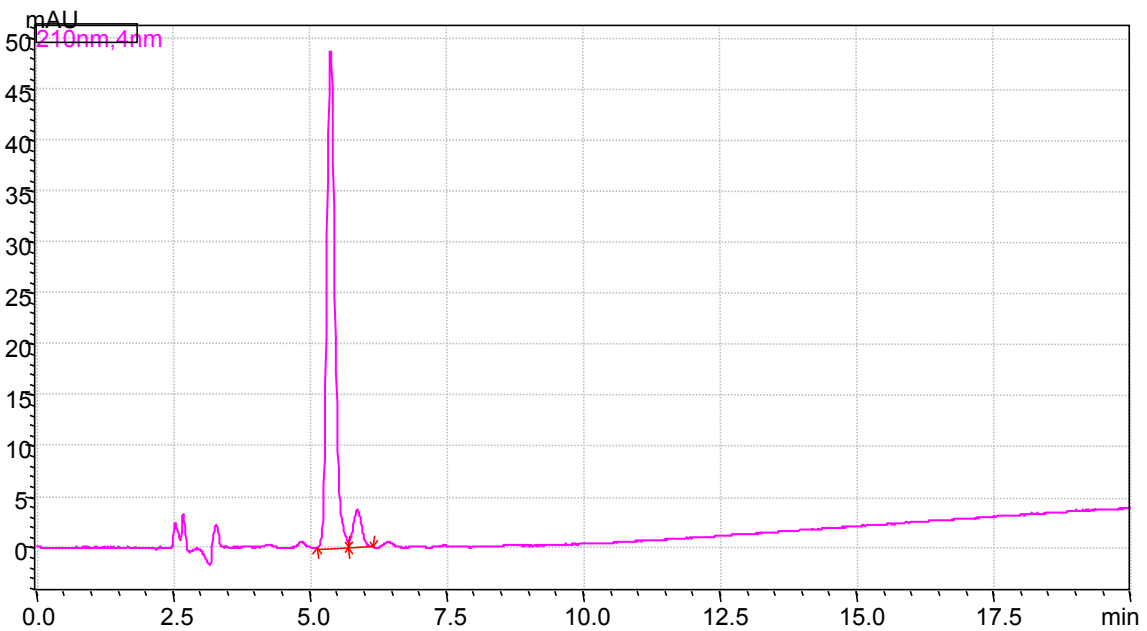
No.	RT	Area	High	Con%	Separation	T.plate	Tailing factor
1	5.384	569816	55891	92.137	--	6160	1.249
2	5.869	48631	4379	7.863	1.667	5826	--
Total		618448	60270	100			

Reb-E Plant extraction181021-1 13.88.lcd



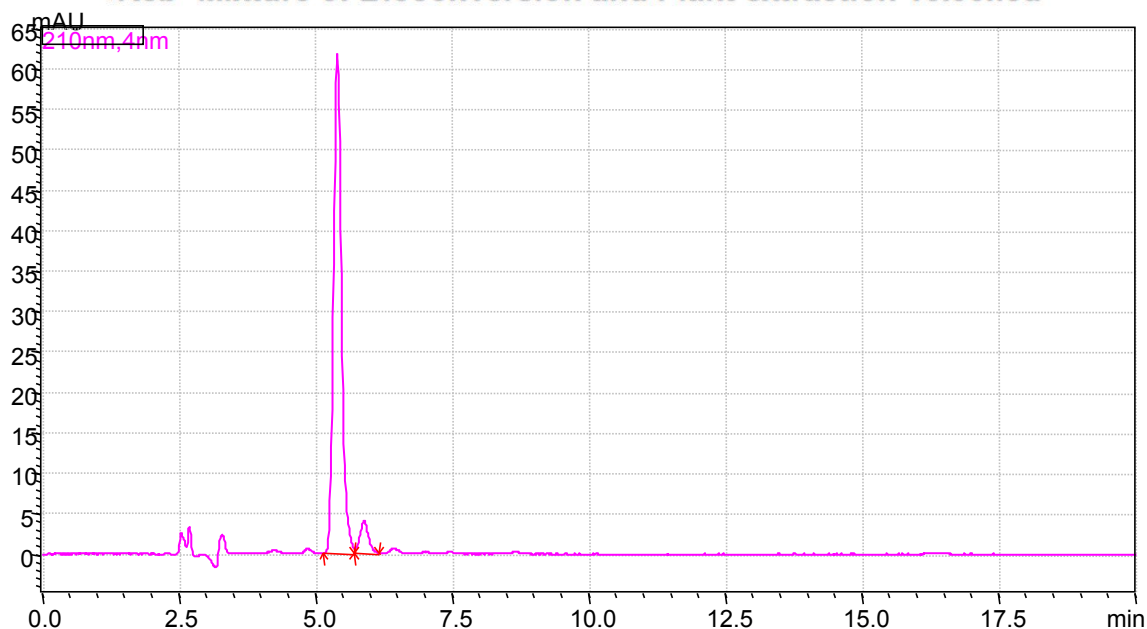
No.	RT	Area	High	Con%	Separation	T.plate	Tailing factor
1	5.325	521161	52182	92.373	—	6249	1.226
2	5.796	43033	3962	7.627	1.648	5903	--
Total		564194	56144	100			

Reb-EPlant extraction181021-1 13.21.lcd



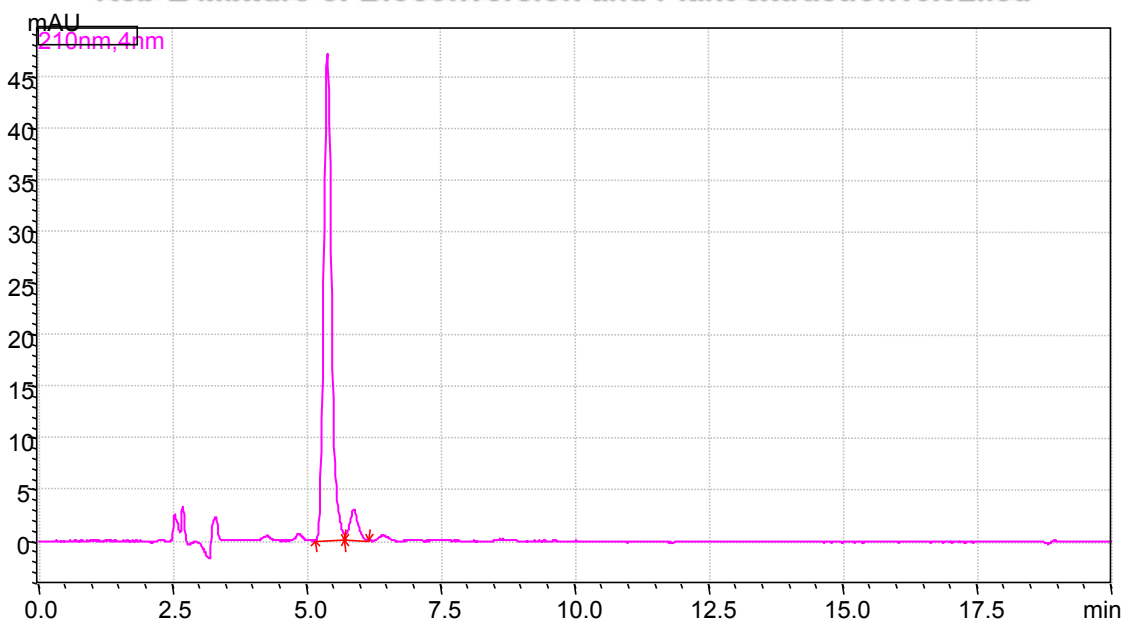
No.	RT	Area	High	Con%	Separation	T.plate	Tailing factor
1	5.393	497919	48756	92.45	--	6177	1.238
2	5.883	40662	3694	7.55	1.682	5824	--
Total		538582	52450	100			

Reb- Mixture of Bioconversion and Plant extraction 16.90.lcd



No.	RT	Area	High	Con%	Separation	T.plate	Tailing factor
1	5.409	621590	61909	93.563	--	6106	1.216
2	5.902	43606	4011	6.607	1.692	5966	--
Total		676903	65920	100			

Reb-E Mixture of Bioconversion and Plant extraction16.92.lcd



No.	RT	Area	High	Con%	Separation	T.plate	Tailing factor
1	5.409	624998	59909	93.012	--	6106	1.216
2	5.902	43606	4011	6.98	1.692	5966	--
Total		676903	65920	100			

Sample No.	Name	Source	Concentration	Area	Retention Time(min)
1	Standard	Purchased	15.49mg/50ml	569107	5.393
2	Standard	Purchased	15.49mg/50ml	569816	5.384
3	Reb-E	Bioconversion	12.90mg/50ml	482857	5.403
4	Reb-E	Bioconversion	16.96mg/50ml	631298	5.409
5	Reb-E	Plant Extraction	13.88mg/50ml	521161	5.325
6	Reb-E	Plant Extraction	13.21mg/50ml	497919	5.393
7	Reb-E	Bioconversion and Plant Extraction	(8.13+8.77)mg/50ml	621590	5.409
8	Reb-E	Bioconversion and Plant Extraction	(7.32+ 9.6)mg/50ml	624998	5.409